

REOPENING 11.05.22 – SIHL CITY CH

Construction, Fitting & Store Concept / May 2022



MediaMarktSaturn
Retail Group

Facts & Figures

Address: Kalanderplatz 1
CH – 8045 Zürich

Location: Shopping Center

Sales Area: 2'753,41m²
incl. Entrance & Cashes

Chief Customer Officer: Roland Portmann



The store was opened in **2006** and has seen several remodelings since then. The last big ones were:

2012 Total remodeling - **2015** Total remodeling - **2017** face Lifting Entrance

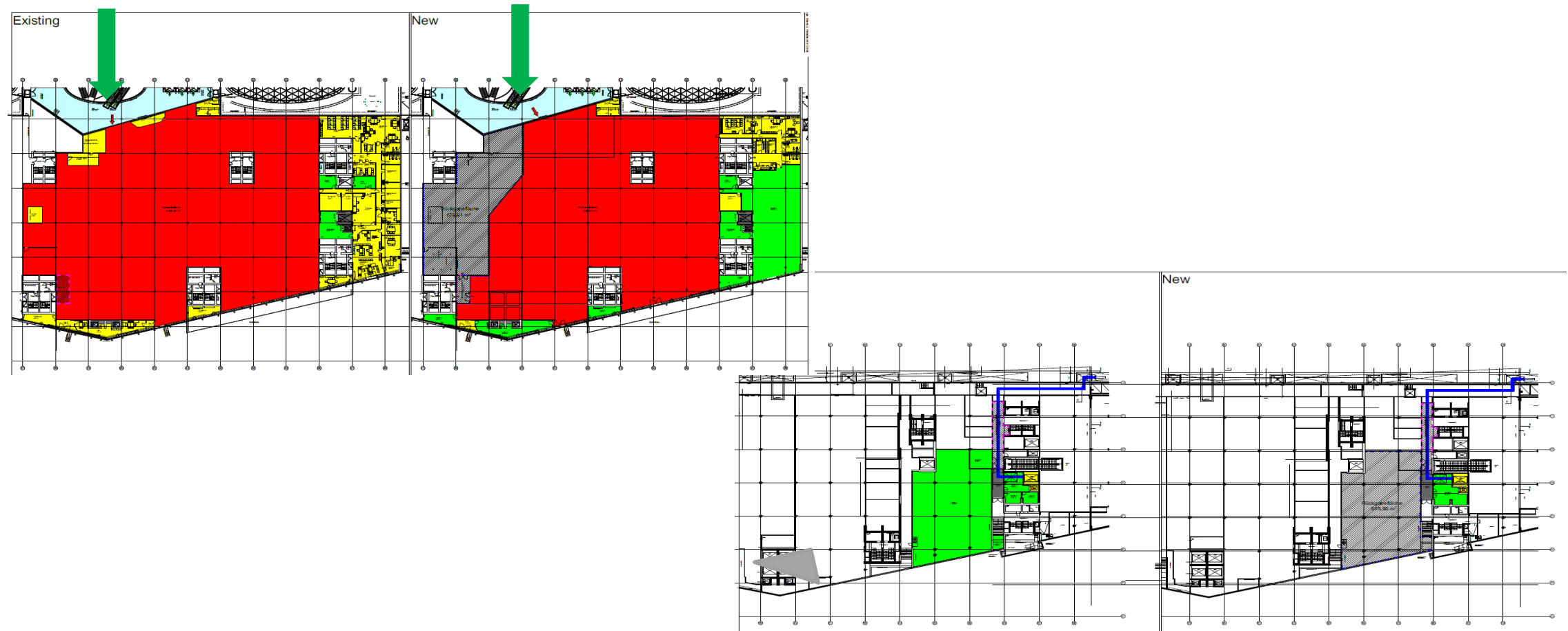
Until the last remodeling the store still had carpet flooring and the old fluorescent tubes,

Surface reduction

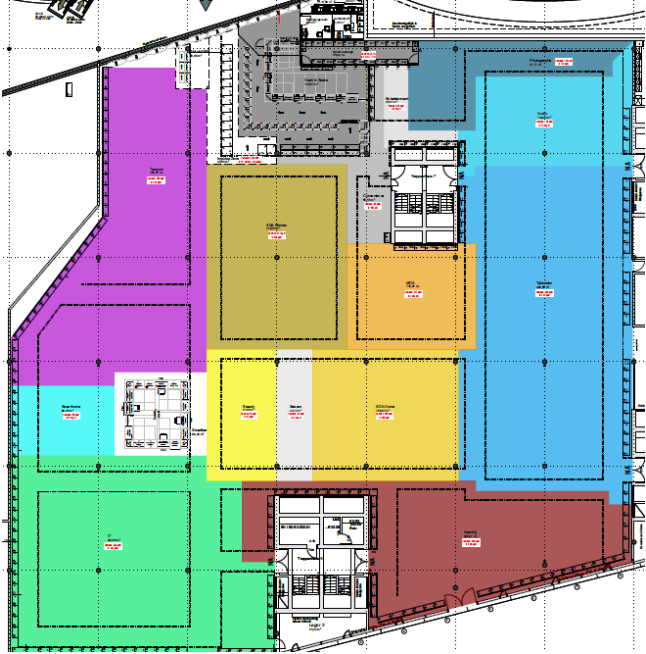
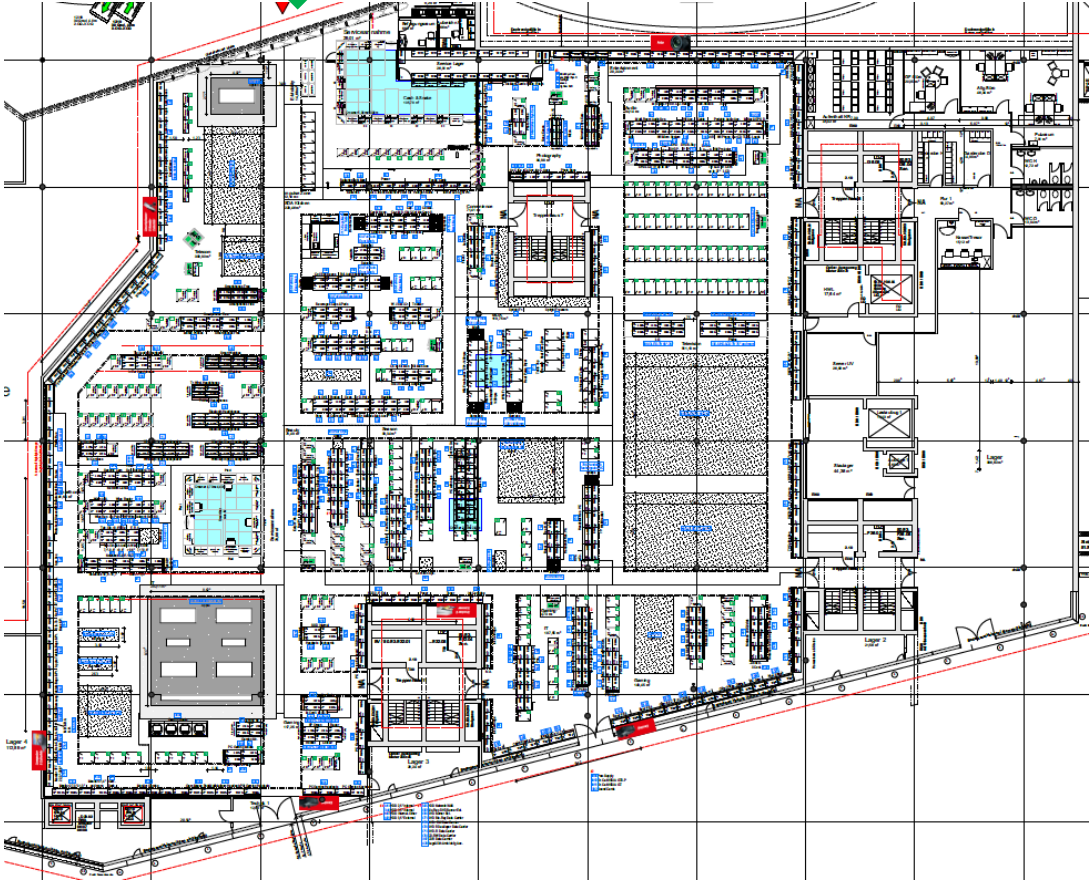
630m² of sales area have been dismantled and returned to the landlord on 30.04.2022

Backoffice and social area have been reduced by 540m²

The warehouse was relocated from the ground floor to the 3rd floor next to the sales area



New Store Layout



- TELEVISION >
- AUDIO >
- SMARTHOME >
- PHOTOGRAPHY >
- MDA >
- SDA KITCHEN >
- SDA HOME >
- BEAUTY >
- TELECOM >
- IT >
- GAMING >
- CONVENIENCE >

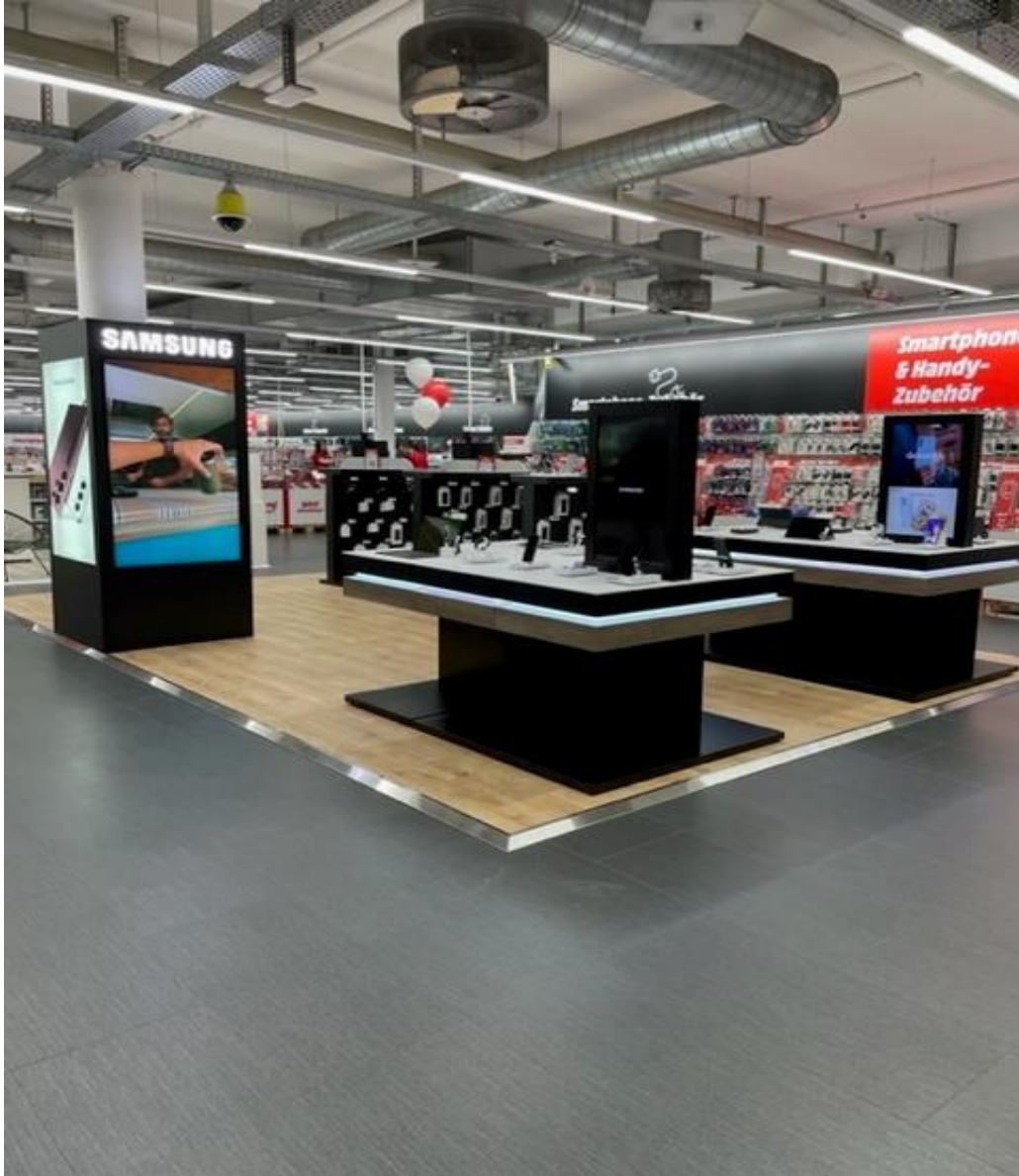
Entrance



KIS & Snake



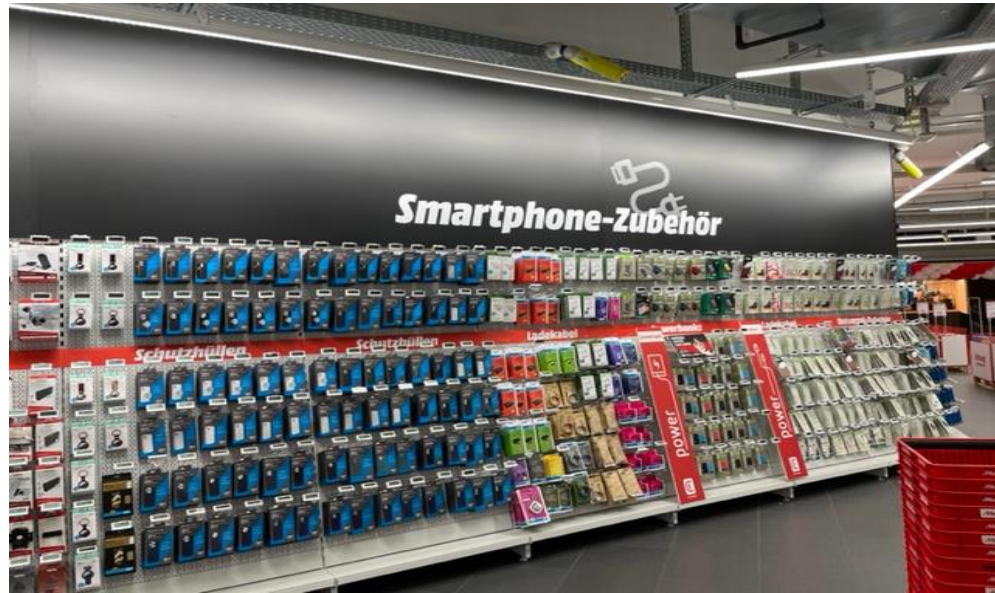
Smartbar & Samsung SiS



Telecom



Telecom Accessories



Telecom Accessories



IT Notebooks



Apple SiS 3.0 (First in CH!)



IT Tablets



IT Suppliers



IT Accessories



Gaming



Gaming



Gaming



Gaming



TV



TV



TV



TV



TV Supplier



Audio



Audio



Barista & Coffee



Barista & Coffee



SDA Kitchen



SDA Kitchen



SDA Beauty



SDA Home



MDA



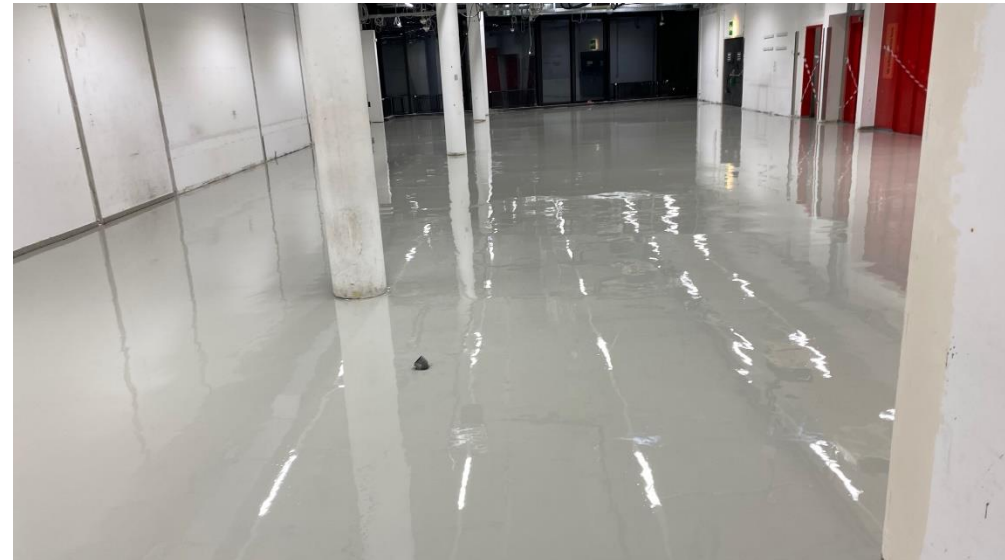
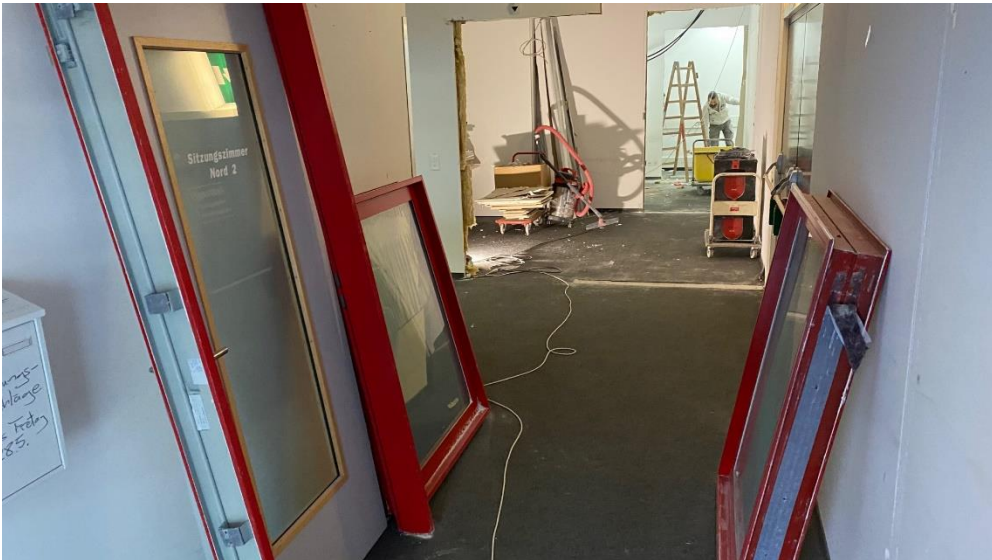
The «making of...»



The «making of...»



The «making of...»



The «making of...»



Good luck to the CCO, Roland Portmann
and his entire store team!

...and many thanks to the CCOs from the
other stores and their store teams, the
teams from Procurement, Supply Chain,
Service & Solutions, our colleagues from
Store Concept International and many
others for their great support!

Team Construction, Fitting & Store Concept

**Thank
you**



13.05.2022 – A. Schiller